












Serie Line	Finitura cromo satinato Chromium satin finishing	A	B	C		
3500-M	3500MCS30101X3	41	31	10	5-20	
3500-M	3500MCS35101X3	46	36	10	5-20	
3500-M	3500MCS40101X3	51	41	10	5-20	
3500-M	3500MCS45101X3	56	46	10	5-20	
3500-M	3500MCS50101X3	61	51	10	5-20	
3500-C	3500CCS30301X5	62	31	31	5-20	Disponibile versione con cam 10/13 denti
3500-C	3500CCS30351X5	67	31	36	5-20	
3500-C	3500CCS30401X5	72	31	41	5-20	Available with cam 10/13 teeth
3500-C	3500CCS35351X5	72	36	36	5-20	
3500-C	3500CCS30451X5	77	31	46	5-20	
3500-C	3500CCS35401X5	77	36	41	5-20	
3500-C	3500CCS30501X5	82	31	51	5-20	
3500-C	3500CCS35451X5	82	36	46	5-20	
3500-C	3500CCS40401X5	82	41	41	5-20	
3500-C	3500CCS30551X5	87	31	56	5-20	
3500-C	3500CCS35501X5	87	36	51	5-20	
3500-C	3500CCS40451X5	87	41	46	5-20	
3500-C	3500CCS30601X5	92	31	61	5-20	
3500-C	3500CCS35551X5	92	36	56	5-20	
3500-C	3500CCS40501X5	92	41	51	5-20	
3500-C	3500CCS45451X5	92	46	46	5-20	
3500-C	3500CCS35601X5	97	36	61	5-20	
3500-C	3500CCS40551X5	97	41	56	5-20	
3500-C	3500CCS45501X5	97	46	51	5-20	
3500-C	3500CCS30701X5	102	31	71	5-20	
3500-C	3500CCS40601X5	102	41	61	5-20	
3500-C	3500CCS50501X5	102	51	51	5-20	
3500-C	3500CCS30801X5	112	31	81	5-20	
3500-C	3500CCS40701X5	112	41	71	5-20	
3500-C	3500CCS50601X5	112	51	61	5-20	
3500-C	3500CCS50701X5	122	51	71	5-20	
3500-P	3500PCS30301X5	62	31	31	5-20	Disponibile versione con cam 10/13 denti
3500-P	3500PCS35301X5	67	36	31	5-20	
3500-P	3500PCS40301X5	72	41	31	5-20	Available with cam 10/13 teeth
3500-P	3500PCS35351X5	72	36	36	5-20	
3500-P	3500PCS45301X5	77	46	31	5-20	
3500-P	3500PCS40351X5	77	41	36	5-20	
3500-P	3500PCS35401X5	77	36	41	5-20	
3500-P	3500PCS50301X5	82	51	31	5-20	
3500-P	3500PCS45351X5	82	46	36	5-20	
3500-P	3500PCS35451X5	82	36	46	5-20	
3500-P	3500PCS40401X5	82	41	41	5-20	
3500-P	3500PCS40451X5	87	41	46	5-20	
3500-P	3500PCS60301X5	92	61	31	5-20	
3500-P	3500PCS55351X5	92	56	36	5-20	
3500-P	3500PCS50401X5	92	51	41	5-20	
3500-P	3500PCS45451X5	92	46	46	5-20	
3500-P	3500PCS40501X5	92	41	51	5-20	
3500-P	3500PCS50451X5	97	51	46	5-20	
3500-P	3500PCS60401X5	102	61	41	5-20	
3500-P	3500PCS50501X5	102	51	51	5-20	
3500-P	3500PCS55451X5	102	56	46	5-20	
3500-Q	3500QCS30301X5	62	31	31	5-20	Disponibile versione con cam 10/13 denti
3500-Q	3500QCS30351X5	67	31	36	5-20	
3500-Q	3500QCS30401X5	72	31	41	5-20	Available with cam 10/13 teeth
3500-Q	3500QCS30451X5	77	31	46	5-20	
3500-Q	3500QCS30501X5	82	31	51	5-20	
3500-E	3500ECS1530XX3		15	30	5-20	

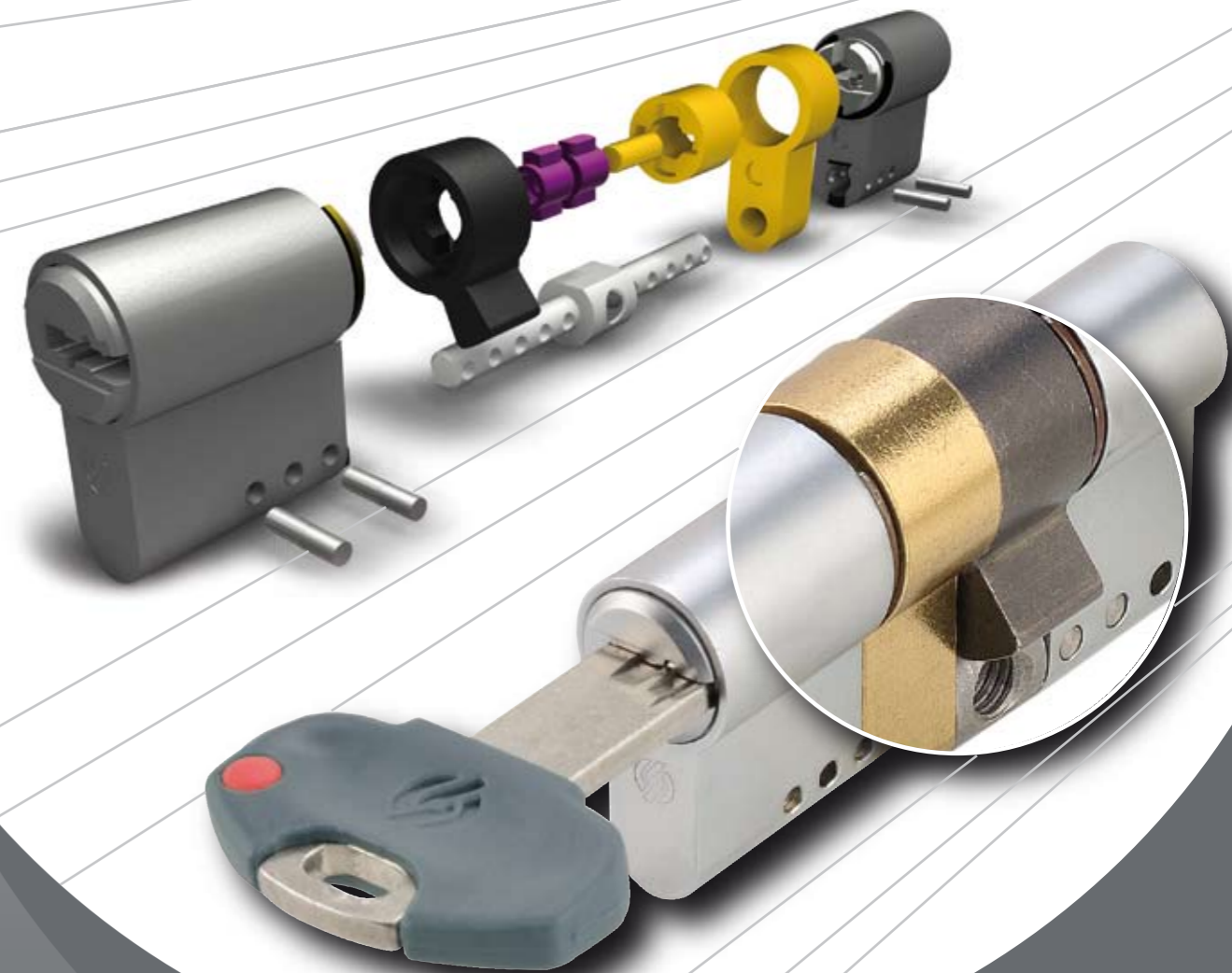
Cilindro per serratura per cancelletto elettrico / Cylinder for electric gate lock



## CILINDRO MODULARE MODULAR CYLINDER

# K5

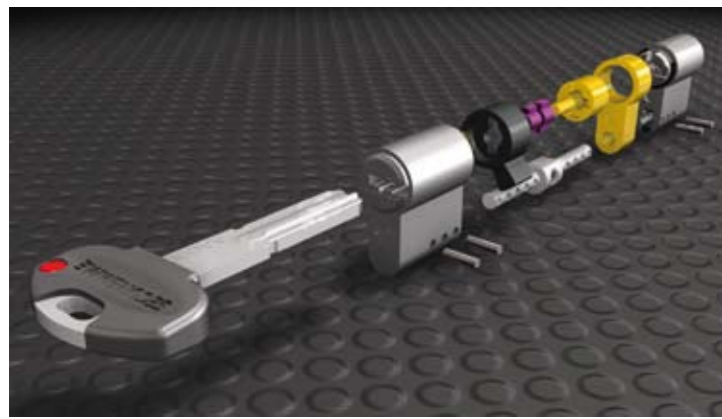
ALTISSIMA SICUREZZA  
E MASSIMA PRATICITÀ  
HIGH SECURITY  
AND MAXIMUM CONVENIENCE



www.securemme.it | E-mail: info@securemme.it

www.securemme.it

Made in Italy



## THE CHOICE OF CYLINDER IS VERY IMPORTANT!

Securemme offers the new modular high security line K5, registered key with protected duplication, security card for authorized keys duplication, high resistance against bumping and drill.

### MODULAR FEATURE

- The main feature of K5 is the modular system that allows the arrangement of the requested cylinder model and length by assembling 5/10/20 mm thicknesses to the main body of 30 mm.
- K5 stands out for its easy KA and master MK, GMK, GGMK groups executions, keeping security and comfort of opening more entries with different combinations by one only key. For example you can open gate, main entrance, apartment door and boiler room by the same key.

### TECHNICAL FEATURES

- Flat reversible silver nickel keys. 1 site key (\*) and 3/5 sealed definitive keys
- (\*) Construction key system: use of the first key (site key) during workings. When workings are finished you insert the definitive key and the site one is not operative anymore
- Security card
- **Registered key with protected duplication**
- Combined key coding: pins and moving active elements
- Personalized profile on request 1+3 keys
- Stainless steel reinforcement bar that protects the cylinder body
- Anti-picking pins
- Frontal and back anti-drilling pins
- Chromo satin finishing
- 30° Cam Din lever



**Security card per la duplicazione autorizzata e protetta delle chiavi K5 Securemme. La Security card ti tutela contro le duplicazioni illecite perchè le chiavi sono duplicabili LEGALMENTE, solo ed esclusivamente presso i centri autorizzati Team Securemme e K5 Store. Le chiavi sono accompagnate da una carta di proprietà, dove è riportato il codice indiretto e il numero di chiavi in dotazione.**

**Security card for authorized duplication of K5 Securemme keys. The security card protects you against illegal duplication. Key copies can be LEGALLY arranged exclusively in our authorized Team Securemme dealers and K5 Store. The keys are supplied with relevant property card indicating indirect code and n. of keys included.**

## LA SCELTA DEL CILINDRO È IMPORTANTISSIMA!

Securemme propone la nuova linea K5 modulare di altissima sicurezza, con chiave registrata a duplicazione protetta, security card per la duplicazione autorizzata delle chiavi, resistente al bumping e al trapano.

### MODULARITÀ

- La caratteristica del cilindro K5 è la modularità che permette di comporre la lunghezza e il modello desiderato assemblando i distanziali da 5/10/20 mm al corpo da 30 mm.
- K5 si distingue per la facilità nelle esecuzioni KA e gruppi masterizzati MK, GMK e GGMK mantenendo la sicurezza e la comodità di gestire con un'unica chiave più ingressi con combinazioni diverse.
- Utilizzando una sola chiave si possono aprire il cancello d'entrata, la porta condominiale, la porta di casa, il locale caldaia ecc.

### CARATTERISTICHE TECNICHE

- Chiavi piatte reversibili in alpacca. 1 chiave da cantiere (\*) e 3/5 chiavi sigillate definitive;
- (\*) Sistema da cantiere: una chiave può essere utilizzata in fase di cantiere e a lavori ultimati, inserendo una delle chiavi definitive, si rende inutilizzabile la precedente
- Security card
- **Chiave registrata a duplicazione protetta**
- Cifratura combinata: perni ed elementi mobili attivi
- Profilo personalizzato su richiesta 1+3 chiavi
- Barra di rinforzo in acciaio inox che protegge il corpo del cilindro
- Perni antimanipolazione
- Spine antitrapano fronte e retro
- Finitura cromo satinata
- Cam Din 30° sporgente



## I VANTAGGI DEL KIT "VALIGETTA" ART. 35VAKCS20IT

Facilità di montaggio direttamente sul posto dell'intervento senza inutili costi di sopralluogo. Con gli articoli in dotazione si possono comporre tutti i modelli **chiave - chiave (C), doppia funzione/frizionato (D), mezzo cilindro (M), pomolo (P), predisposizione pomolo (Q) e tutte le misure richieste riducendo le scorte di magazzino.**

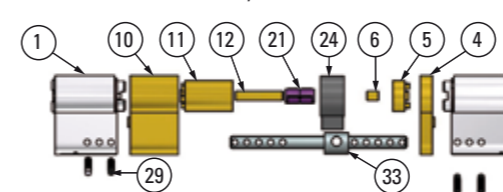


## THE ADVANTAGES OF KIT "VALIGETTA" ART. 35VAKCS20IT

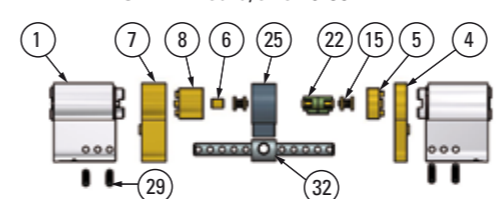
Easy assembly even directly on place thus avoiding useless inspection costs. The standards components included in supply allow the assembly of all models **key - key (C), double function (D), half cylinder (M), knob (P), knob predisposition (Q) and all measures requested thus reducing the stock.**

## ESEMPI DI MONTAGGIO EXAMPLES OF ASSEMBLY

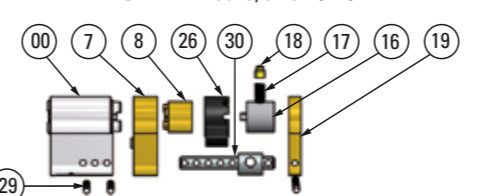
LINEA: **K5 C** misura/size 50-35 mm



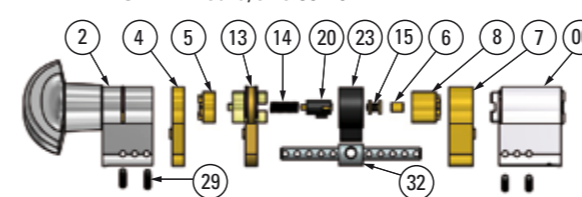
LINEA: **K5 D** misura/size 40-35 mm



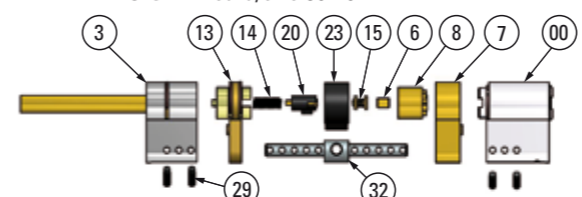
LINEA: **K5 M** misura/size 40-10 mm



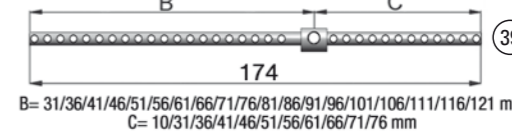
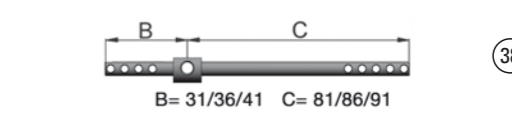
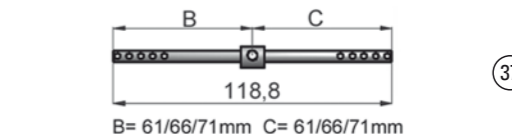
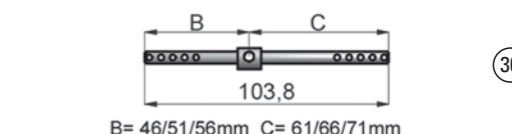
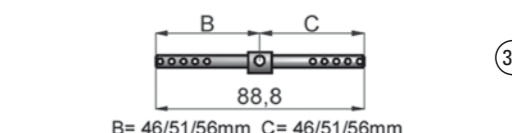
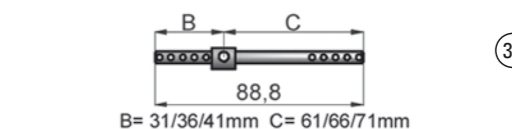
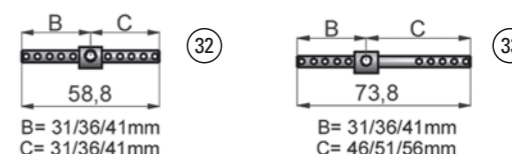
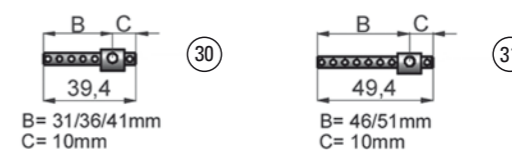
LINEA: **K5 P** misura/size 35-40 mm



LINEA: **K5 Q** misura/size 30-40 mm



## BARRE DI ALLUNGAMENTO EXTENSION STEEL BAR



## LEGENDA LEGEND

- 00 3500UCSXX271X3
- 1 3500UCS27271X5
- 2 3500PCS21XX
- 3 3500QCS21XX
- 4 DS3500COT05XX
- 5 DR3500CZA05XX
- 6 DT3500COT05XX
- 7 DS3500COT10XX
- 8 DR3500CZA10XX
- 9 DT3500COT10XX
- 10 DS3500COT20XX
- 11 DR3500CZA20XX
- 12 DT3500COT20XX
- 13 DS3500POT05XX
- 14 ML3500PZB11XX
- 15 DT3500POT05XX
- 16 DR3500MOT10XX
- 17 ML3500MZB11XX
- 18 SP3500MOT05XX
- 19 DS3500MOT05XX
- 20 IC3500PCN10XX
- 21 IC3500CCN10XX
- 22 IC3500DCN10XX
- 23 CM3500PCN10XX
- 24 CM3500CCN10XX
- 25 CM3500DCN10XX
- 26 CM3500MCN10XX
- 29 SP3500CAIXXX
- 30 SB3500MAI3010
- 31 SB3500MAI4010
- 32 SB3500CAI3030
- 33 SB3500CAI3045
- 34 SB3500CAI3060
- 35 SB3500CAI4545
- 36 SB3500CAI4560
- 37 SB3500CAI6060
- 38 SB3500CAI3090
- 39 SB3500CAIXXX